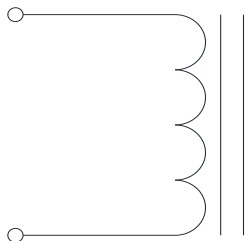


Rev	Description	By	Date
C	Added SRF, Capacitance and shortened leads	KA	3-Jul-19
D	Corrected pin dimensions and DC bias graph	AG	17-Sep-20

ELECTRICAL SPECIFICATIONS @ 25°C

L:	4.9μH±15% @ 10kHz, 1Vrms
Isat:	ΔL ≤ 10% @ 116A ΔL ≤ 30% @ 205A
Irms:	ΔT ≤ 20°C @ 61A ΔT ≤ 40°C @ 92A
DCR:	0.7mΩ Max
SRF:	17 MHz Typ
Capacitance:	16 pF Typ
Hipot:	500Vdc, 1mA, 5s, wdg to core
Insulation Class:	Class H 180°C
RoHS Compliant:	Yes

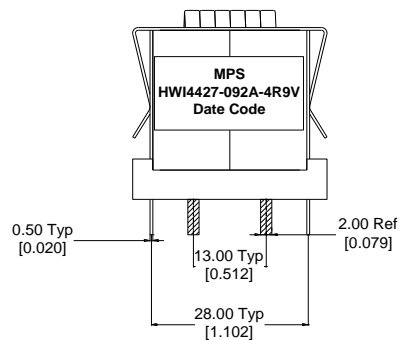
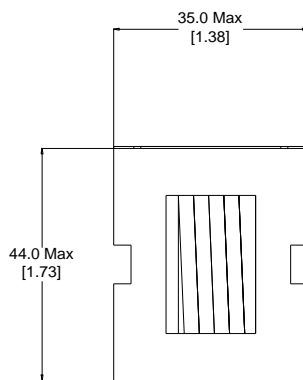
SCHEMATIC



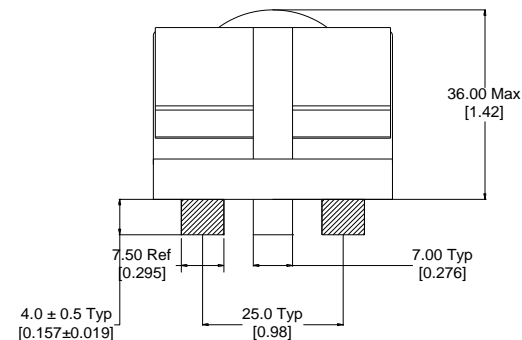
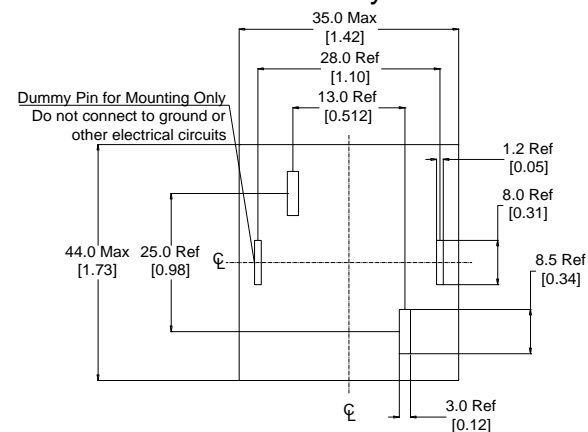
MARKING

MPS
HWI4427-092A-4R9V_REV#
Date Code

DIMENSIONS



Recommended PCB Layout



Dimensions: mm/[inch]

Notice of Proprietary Property

These drawings and specifications are the property of MPS and shall not be, reproduced, copied or used as the basis of manufacture of sale of apparatus without express written authorization

Dimensions Unless otherwise specified .XX ± 0.254mm [.010"] .XXX ± 0.13mm [.005"]	DRAWN BY: CHECKED BY:	MIG KC	17-Mar-16 18-Mar-16	SIZE A	Description <p style="text-align: center;">Helical Wound Inductor</p>		REV D
					Part Number <p style="text-align: center;">HWI4427-092A-4R9V</p>		
WEIGHT: 200 gms					SHEET: 1 OF 2		

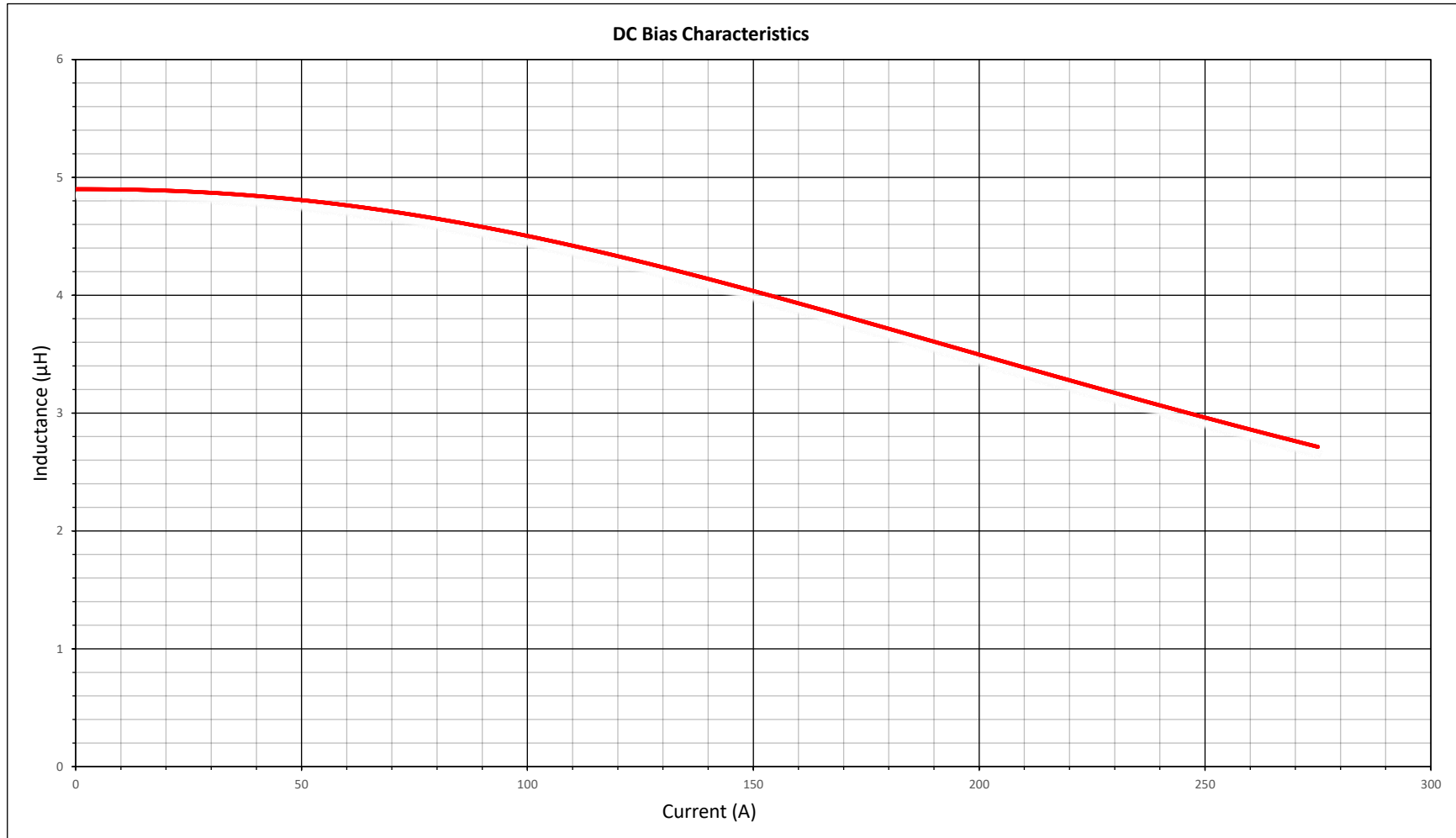


MPS INDUSTRIES, INC.

www.mpsind.com

Tel: (310) 325-1043 Fax: (310) 325-1044


Rev	Description	By	Date
C	Added SRF, Capacitance and shortened leads	KA	3-Jul-19
D	Corrected pin dimensions and DC bias graph	AG	17-Sep-20



Notice of Proprietary Property

These drawings and specifications are the property of MPS and shall not be reproduced, copied or used as the basis of manufacture or sale of apparatus without express written authorization

Dimensions Unless otherwise specified .XX ± 0.254mm [.010"] .XXX ± 0.13mm [.005"]	DRAWN BY:	MIG	17-Mar-16	SIZE
	CHECKED BY:	KC	18-Mar-16	A

		MPS INDUSTRIES, INC. www.mpsind.com Tel: (310) 325-1043 Fax: (310) 325-1044	
Description Helical Wound Inductor			
Part Number		HWI4427-092A-4R9V	
SCALE: X:X		WEIGHT: 200 gms SHEET: 2 OF 2	
			REV D