

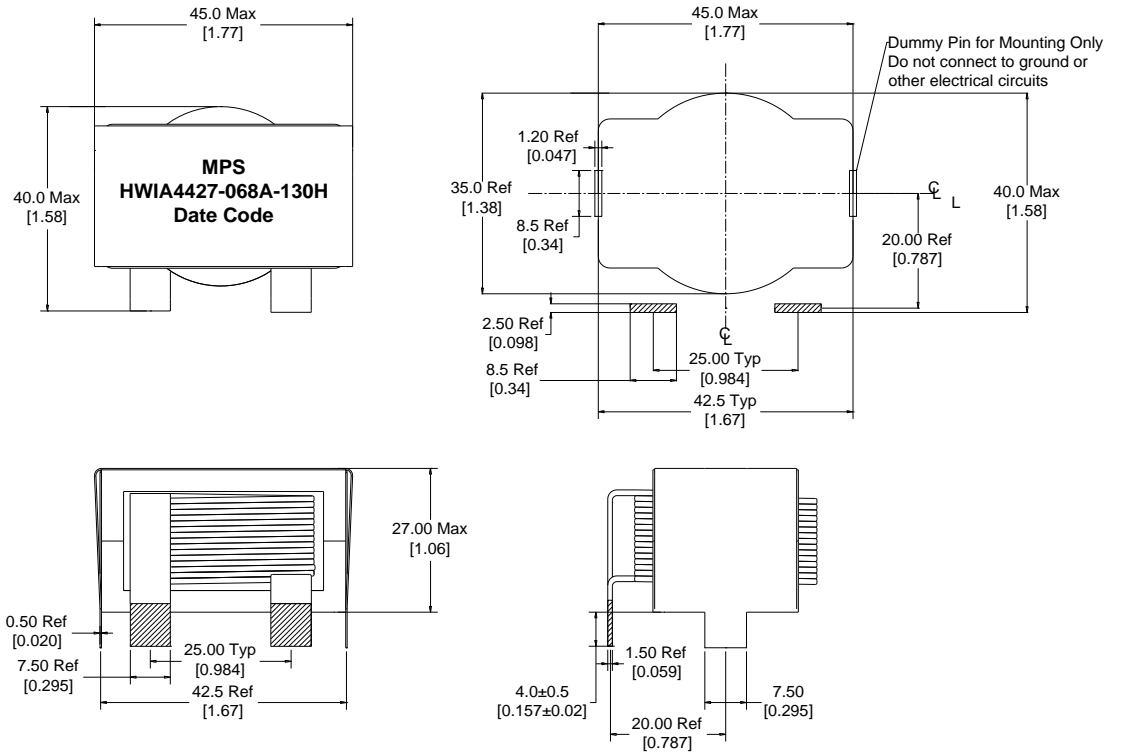
Rev	Description	By	Date
C	Changed Lead length, added SRF and Capacitance	KA	31-Aug-18
D	Corrected pin dimensions and DC bias graph	AG	17-Sep-20

ELECTRICAL SPECIFICATIONS @ 25°C

L:	13μH±15% @ 10kHz, 1Vrms
Isat:	ΔL ≤ 10% @47A ΔL ≤ 30% @91A
Irms:	ΔT ≤ 20°C @ 45A ΔT ≤ 40°C @68A
DCR:	1.3mΩ Max
SRF:	15.1 MHz Typ
Capacitance:	8.5 pF
Hipot:	500Vdc, 1mA, 5s, wdg to core
Insulation Class:	Class H 180°C
RoHS Compliant:	Yes

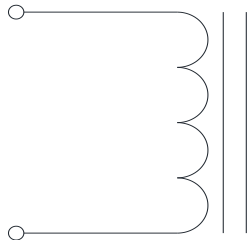
DIMENSIONS

Recommended PCB Layout



Dimensions: mm/[inch]

SCHEMATIC



MARKING

MPS
HWIA4427-068A-130H_REV#
Date Code

Notice of Proprietary Property

These drawings and specifications are the property of MPS and shall not be, reproduced, copied or used as the basis of manufacture or sale of apparatus without express written authorization

Dimensions Unless otherwise specified .XX ± 0.254mm [.010"] .XXX ± 0.13mm [.005"]	DRAWN BY: CHECKED BY:	MIG KC	17-Mar-16 18-Mar-16	SIZE A	Part Number	REV D
					HWIA4427-068A-130H	
WEIGHT: 190 gms					SHEET: 1 OF 2	



MPS INDUSTRIES, INC.

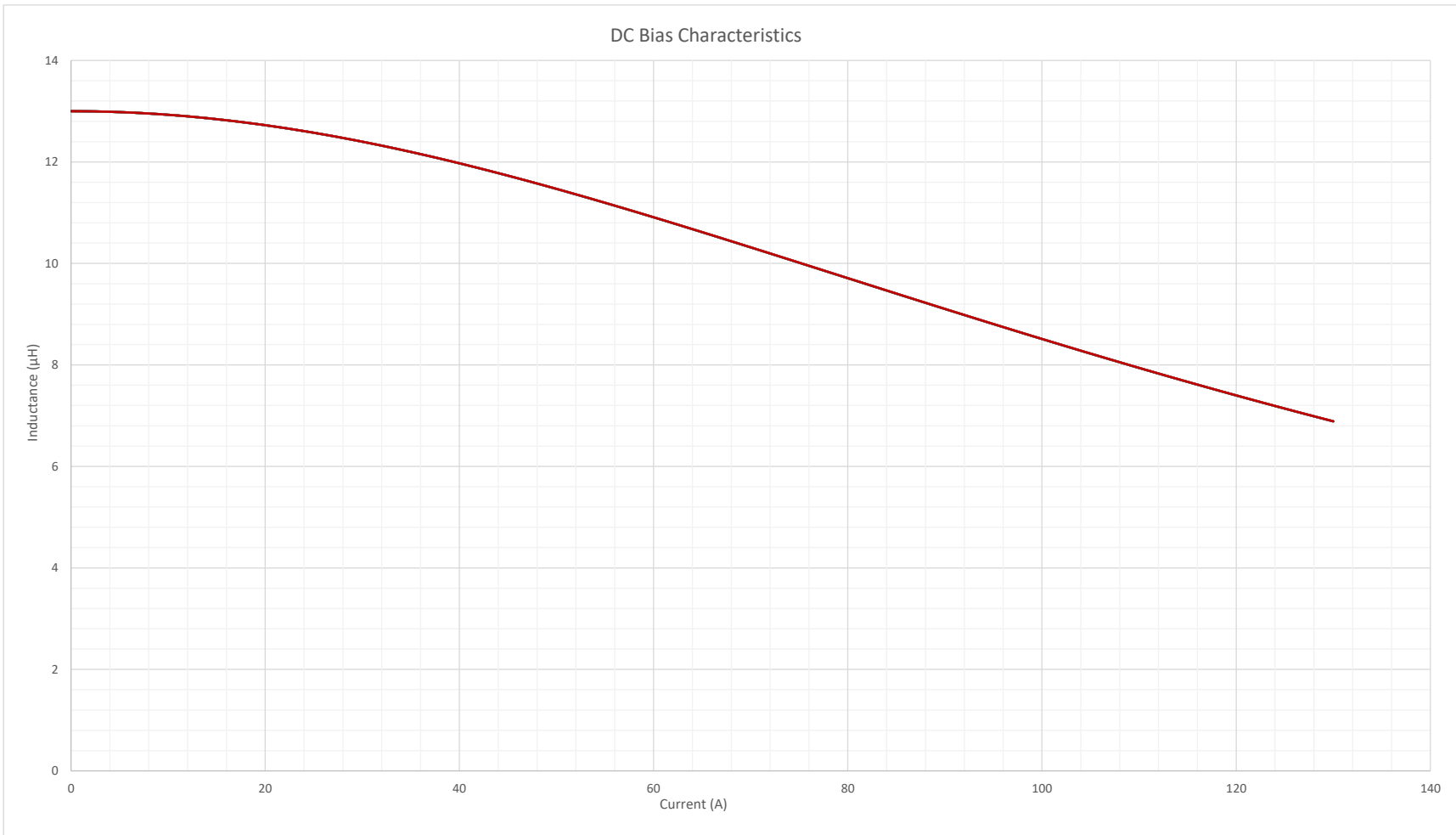
www.mpsind.com

Tel: (310) 325-1043 Fax: (310) 325-1044

Description

Helical Wound Inductor

Rev	Description	By	Date
C	Changed Lead length, added SRF and Capacitance	KA	31-Aug-18
D	Corrected pin dimensions and DC bias graph	AG	17-Sep-20



Notice of Proprietary Property

These drawings and specifications are the property of MPS and shall not be reproduced, copied or used as the basis of manufacture of sale of apparatus without express written authorization



MPS INDUSTRIES, INC.

www.mpsind.com

Tel: (310) 325-1043 Fax: (310) 325-1044

Description

Helical Wound Inductor

Dimensions Unless otherwise specified .XX ± 0.254mm [.010"] .XXX ± 0.13mm [.005"]	DRAWN BY:	MIG	17-Mar-16	SIZE	Part Number	REV
	CHECKED BY:	KC	18-Mar-16	A		
					HWIA4427-068A-130H	D
			SCALE: X:X	WEIGHT: 190 gms	SHEET: 2 OF 2	