

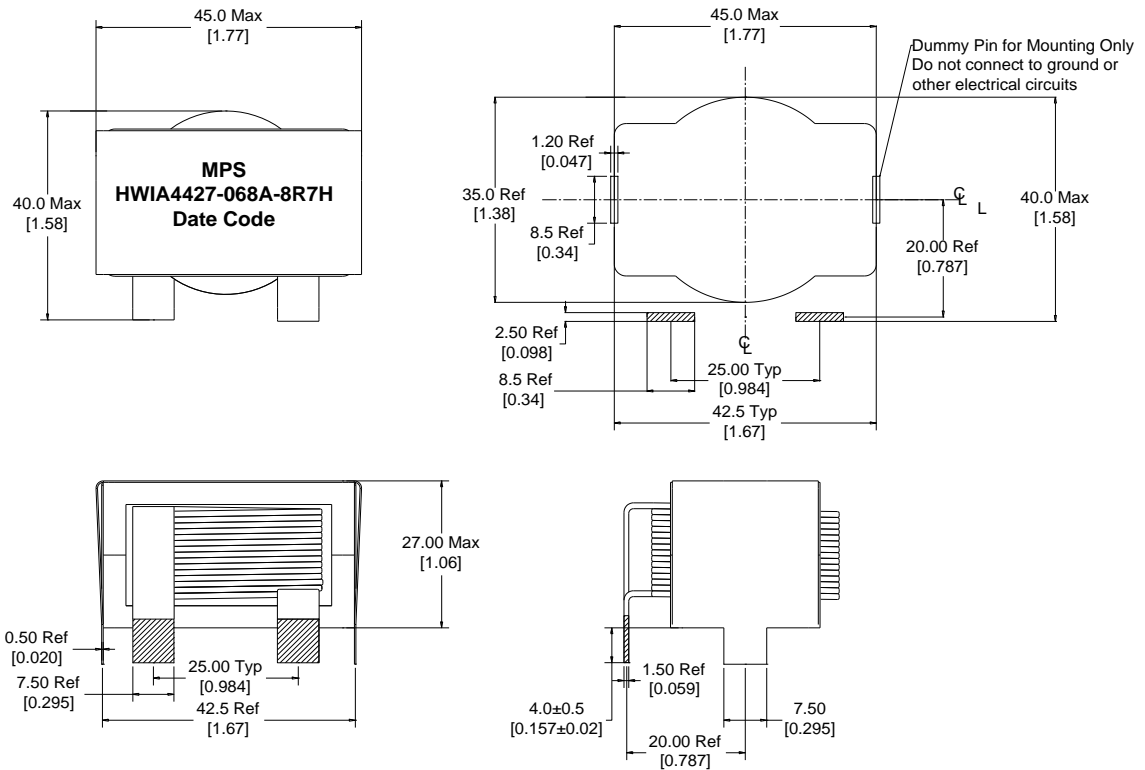
Rev	Description	By	Date
C	Changed Lead length, added SRF and Capacitance	KA	31-Aug-18
D	Corrected pin dimensions and DC bias graph	AG	17-Sep-20

ELECTRICAL SPECIFICATIONS @ 25°C

L:	8.7μH±15% @ 10kHz, 1Vrms
Isat:	ΔL ≤ 10% @87A ΔL ≤ 30% @154A
Irms:	ΔT ≤ 20°C @ 45A ΔT ≤ 40°C @68A
DCR:	1.3mΩ Max
SRF:	20.1 MHz
Capacitance:	7.2 pF
Hipot:	500Vdc, 1mA, 5s, wdg to core
Insulation Class:	Class H 180°C
RoHS Compliant:	Yes

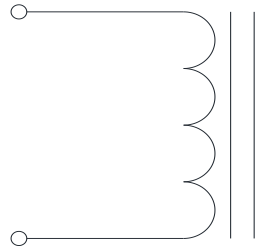
DIMENSIONS

Recommended PCB Layout



Dimensions: mm/[inch]

SCHEMATIC



MARKING

MPS
HWIA4427-068A-8R7H_REV#
Date Code



MPS INDUSTRIES, INC.

www.mpsind.com

Tel: (310) 325-1043 Fax: (310) 325-1044

Notice of Proprietary Property

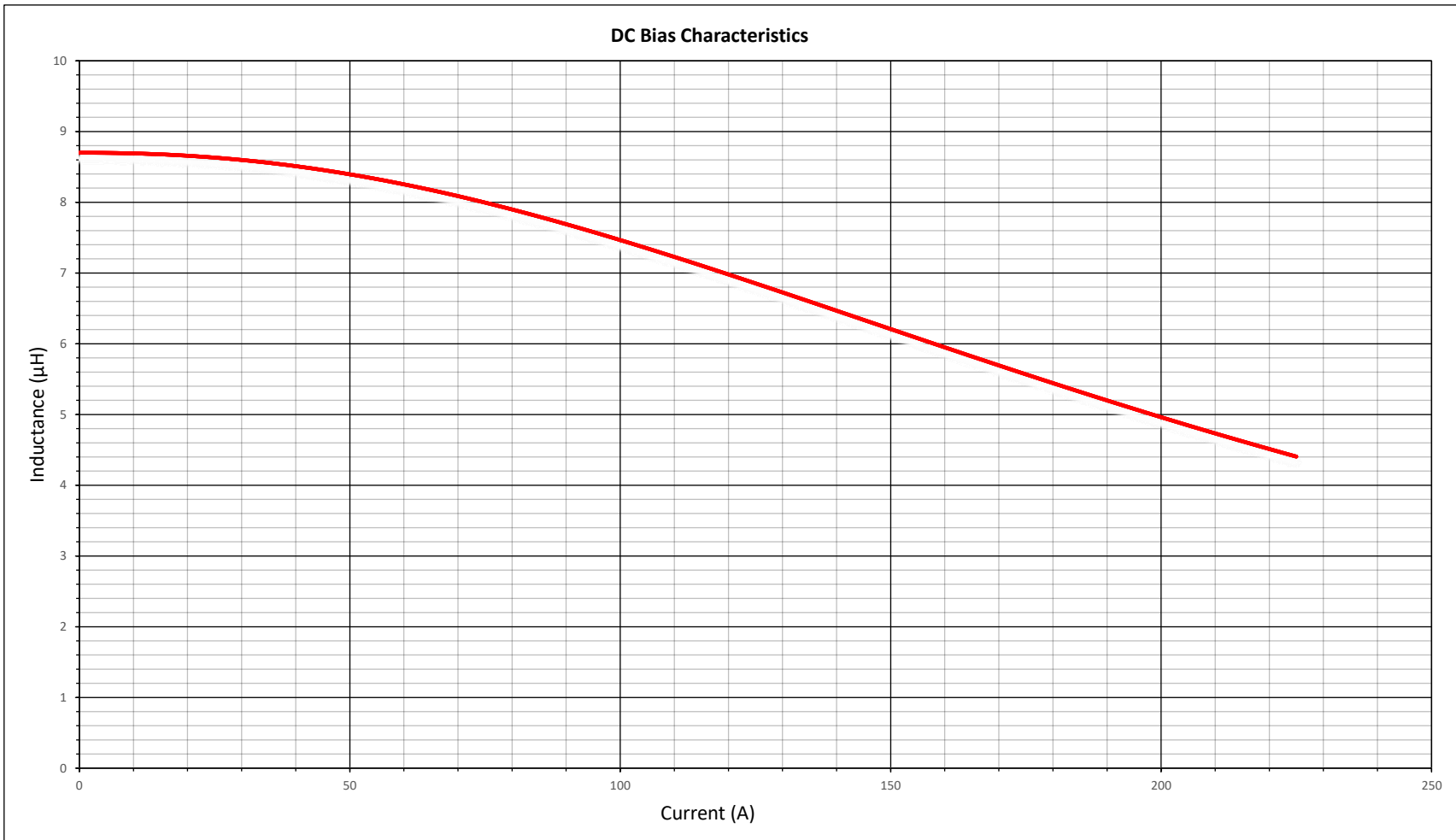
These drawings and specifications are the property of MPS and shall not be, reproduced, copied or used as the basis of manufacture of sale of apparatus without express written authorization

Description

Helical Wound Inductor

Dimensions	DRAWN BY:	MIG	17-Mar-16	SIZE	Part Number	REV
Unless otherwise specified .XX ± 0.254mm [.010"] .XXX ± 0.13mm [.005"]	CHECKED BY:	KC	18-Mar-16	A	HWIA4427-068A-8R7H	D
WEIGHT: 190 gms					SHEET: 1 OF 2	

Rev	Description	By	Date
C	Changed Lead length, added SRF and Capacitance	KA	31-Aug-18
D	Corrected pin dimensions and DC bias graph	AG	17-Sep-20



Notice of Proprietary Property

These drawings and specifications are the property of MPS and shall not be, reproduced, copied or used as the basis of manufacture of sale of apparatus without express written authorization



MPS INDUSTRIES, INC.

www.mpsind.com

Tel: (310) 325-1043 Fax: (310) 325-1044

Description

Helical Wound Inductor

Dimensions
 Unless otherwise specified
 .XX ± 0.254mm [.010"]
 .XXX ± 0.13mm [.005"]

DRAWN BY:
 CHECKED BY:

MIG
 KC

17-Mar-16
 18-Mar-16

SIZE
A

Part Number

HWIA4427-068A-8R7H

REV

D

SCALE: X:X

WEIGHT: 190 gms

SHEET: 2 OF 2