

MINI VIDEO ISOLATION TRANSFORMER



R3536 SERIES



- Mini isolation transformers used to eliminate hum bars or other interference problems due to differences in ground potential or induced common mode noise.
- Ideal for use in CCTV (closed circuit television) applications
- Isolation: 250Vdc (Pri to Sec)
- Operating Temperature 0°C to +70°C
- RoHS Compliant Product
- Custom Design Available

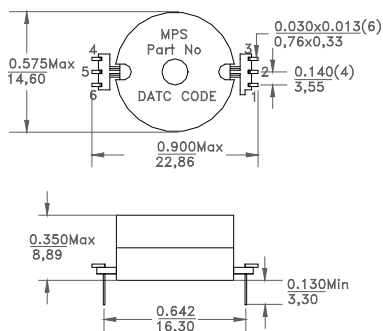
ELECTRICAL PARAMETERS @ 25°C

Part Number	Inductance (mH Min) (1-3)	Leakage Inductance (µH Max) (1-3)	DCR (Ohm Max) (1-3)	Insertion Loss (dB Max)	Frequency Response Typ (-3dB) (6-4)	Impedance Ratio 1-3:6-4 (±3%)	Dimension
R3536-1	140	6.0	12	-1.5	200Hz-8MHz	75Ω : 100Ω	A
R3536-2	165	5.0	12	-1.5	180Hz-10MHz	75Ω : 75Ω	A
R3536-3	450	4.5	8	-1.2	50Hz-10MHz	75Ω : 75Ω	B
R3536-4	350	6.0	8	-1.2	60Hz-10MHz	75Ω : 100Ω	B

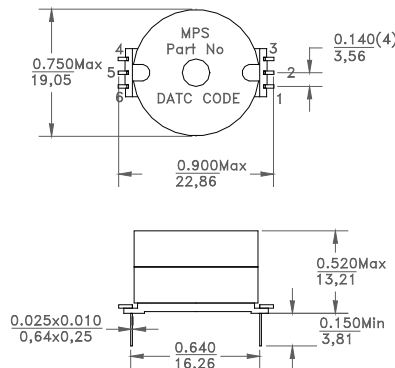
Note:

1. Frequency Response R3536-1, R3536-2: Ref at 100KHz, with 0.5Vp-p max input , 75Ω source
2. Frequency Response R3536-3, R3536-4: Ref at 100KHz, with 1.0Vp-p max input , 75Ω source
3. Polarity: 1 and 6 are in phase
4. Leakage Inductance test at 100KHz, 0.1Vrms
5. CMR: -80dB Typical 50/60Hz

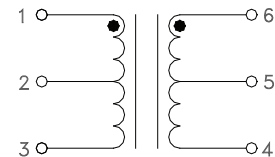
DIMENSION A



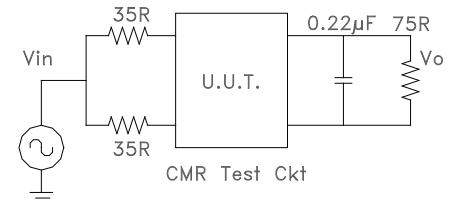
DIMENSION B



SCHEMATIC



COMMON MODE TEST CIRCUIT



Dimensions

Unless otherwise specified, all tolerances are:
 inch: XX : ±0.020 .XXX : ±0.004
 mm: X,X : ±0.51 X,XX : ±0.10

Product performance is limited to specified parameters. Data is subject to change without prior notice.

Tel: 310-325-1043
 Fax: 310-325-1044

www.mpsind.com
 sales@mpsind.com