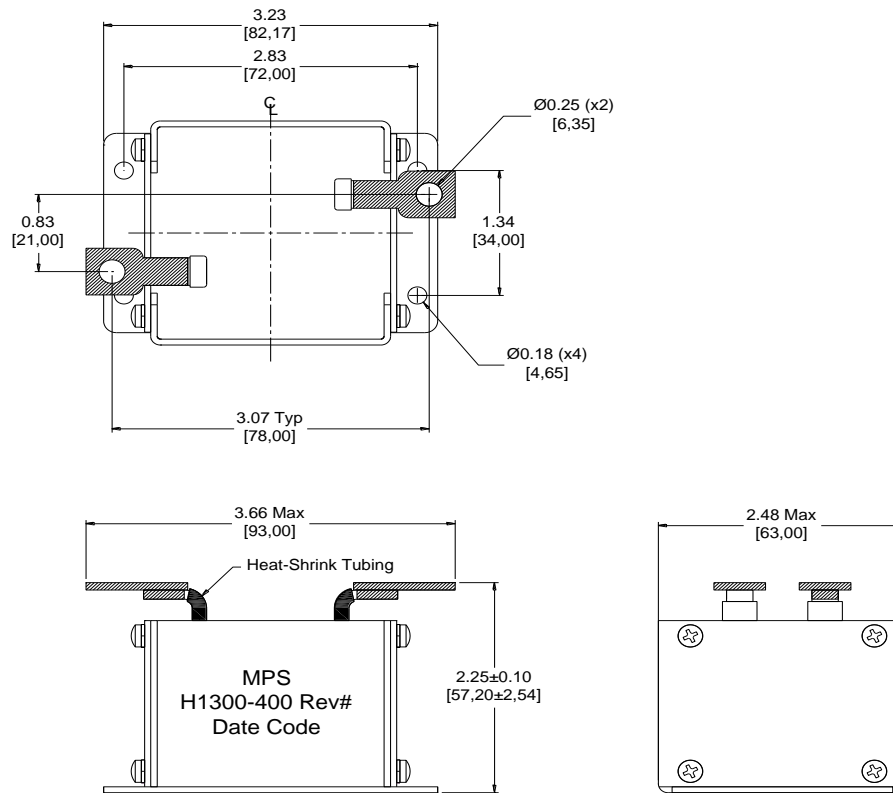


| Rev | Description | By | Date |
|-----|------------------------------|----|-----------|
| A | Released for production | AG | 19-Sep-19 |
| B | Updated inductance to +/-15% | AG | 30-Dec-19 |

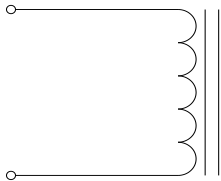
ELECTRICAL SPECIFICATIONS @ 25°C

L: 40μH±15% @ 100kHz, 1Vrms
 Isat: ΔL≤10% @ 44A
 ΔL≤20% @ 65A
 ΔL≤30% @ 85A
 Irms: ΔT≤20°C @ 53A
 ΔT≤40°C @ 81A
 DCR: 2.3mΩ Max
 SRF: 5MHz Typ
 Hipot: 2kVdc, 1mA Max, 10s (wdg to case)
 RoHS Compliant: Yes

DIMENSIONS



SCHEMATIC



MARKING

MPS
 H1300-400 Rev#
 Date Code

Dimensions: inch/[mm]

Notice of Proprietary Property

These drawings and specifications are the property of MPS and shall not be, reproduced, copied or used as the basis of manufacture of sale of apparatus without express written authorization

| | | | | | | |
|---|--------------------------|----------|------------------------|------------------|---|--------------------------------------|
| Dimensions Unless otherwise specified .XX ± .010" [0,254mm] .XXX ± .005" [0,13mm] | DRAWN BY: CHECKED BY: | AG AG | 19-Sep-19 19-Sep-19 | SIZE A | Description High Power Inductor Part Number H1300-400 WEIGHT: 800 gms | REV B SHEET: 1 OF 2 |
|---|--------------------------|----------|------------------------|------------------|---|--------------------------------------|



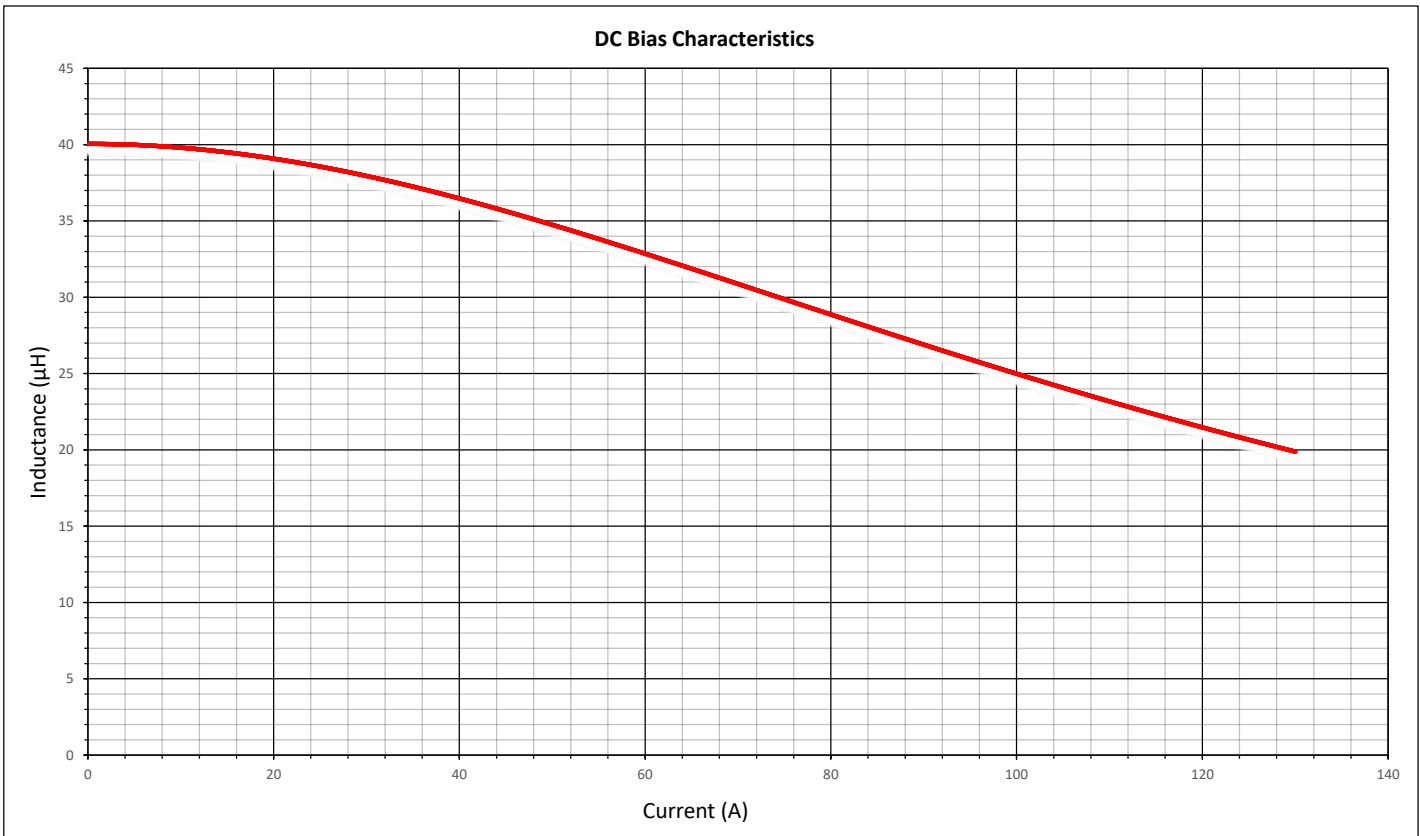
MPS INDUSTRIES, INC.

www.mpsind.com

Tel: (310) 325-1043 Fax: (310) 325-1044

| Rev | Description | By | Date |
|-----|------------------------------|----|-----------|
| A | Released for production | AG | 19-Sep-19 |
| B | Updated inductance to +/-15% | AG | 30-Dec-19 |

DC BIAS



Notice of Proprietary Property

These drawings and specifications are the property of MPS and shall not be reproduced, copied or used as the basis of manufacture of sale of a; AG without express written authorization

7/21/2017
7/21/2017

| | | | |
|---|--------------------------|----------|------------------------|
| Dimensions Unless otherwise specified .XX ± .010" [0,254mm] .XXX ± .005" [0,13mm] | DRAWN BY: CHECKED BY: | AG AG | 19-Sep-19 19-Sep-19 |
|---|--------------------------|----------|------------------------|



MPS INDUSTRIES, INC.

www.mpsind.com

Tel: (310) 325-1043 Fax: (310) 325-1044

| | | |
|-------------|----------------------------|-----------------|
| Description | High Power Inductor | |
| Part Number | H1300-400 | REV B |
| SCALE: X:X | WEIGHT: 800 gms | SHEET: 2 OF 2 |