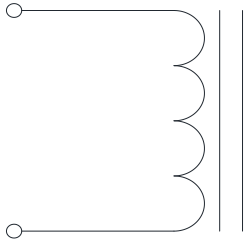


Rev	Description	By	Date
B	Released for Production	MIG	17-Mar-16

ELECTRICAL SPECIFICATIONS @ 25°C

L: 55µH±15% @ 10kHz, 1Vrms
 Isat: ΔL ≤ 10% @ 25A
 ΔL ≤ 30% @ 48A
 Irms: ΔT ≤ 20°C @ 26A
 ΔT ≤ 40°C @ 40 A
 DCR: 4.5mΩ Max
 Hipot: 500Vdc, 1mA Max, 5s, wdg to core
 Insulation Class: Class H 180°C
 RoHS Compliant: Yes

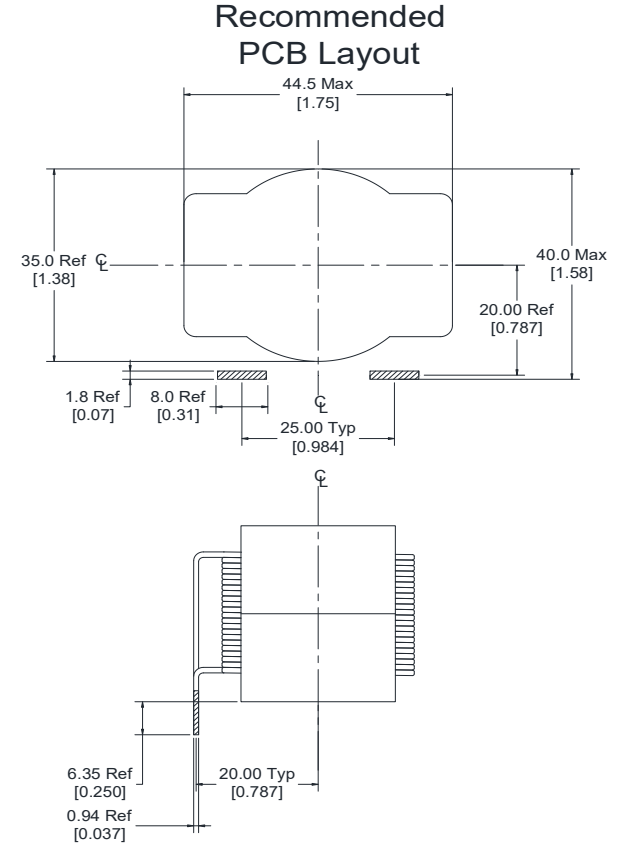
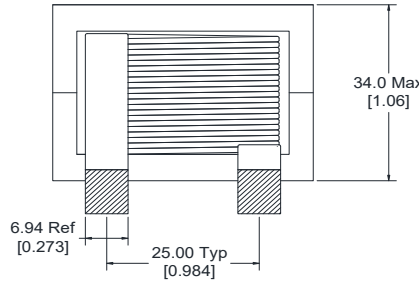
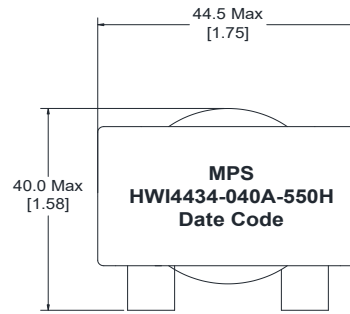
SCHEMATIC



MARKING

MPS
 HWI4434-040A-550H
 Date Code

DIMENSIONS



Dimensions: mm/[inch]

Notice of Proprietary Property

These drawings and specifications are the property of MPS and shall not be reproduced, copied or used as the basis of manufacture of sale of apparatus without express written authorization

Dimensions Unless otherwise specified .XX ± 0.254mm [.010"] .XXX ± 0.13mm [.005"]	DRAWN BY: CHECKED BY:	MIG KC	17-Mar-16 18-Mar-16
---	--------------------------	-----------	------------------------



MPS INDUSTRIES, INC.

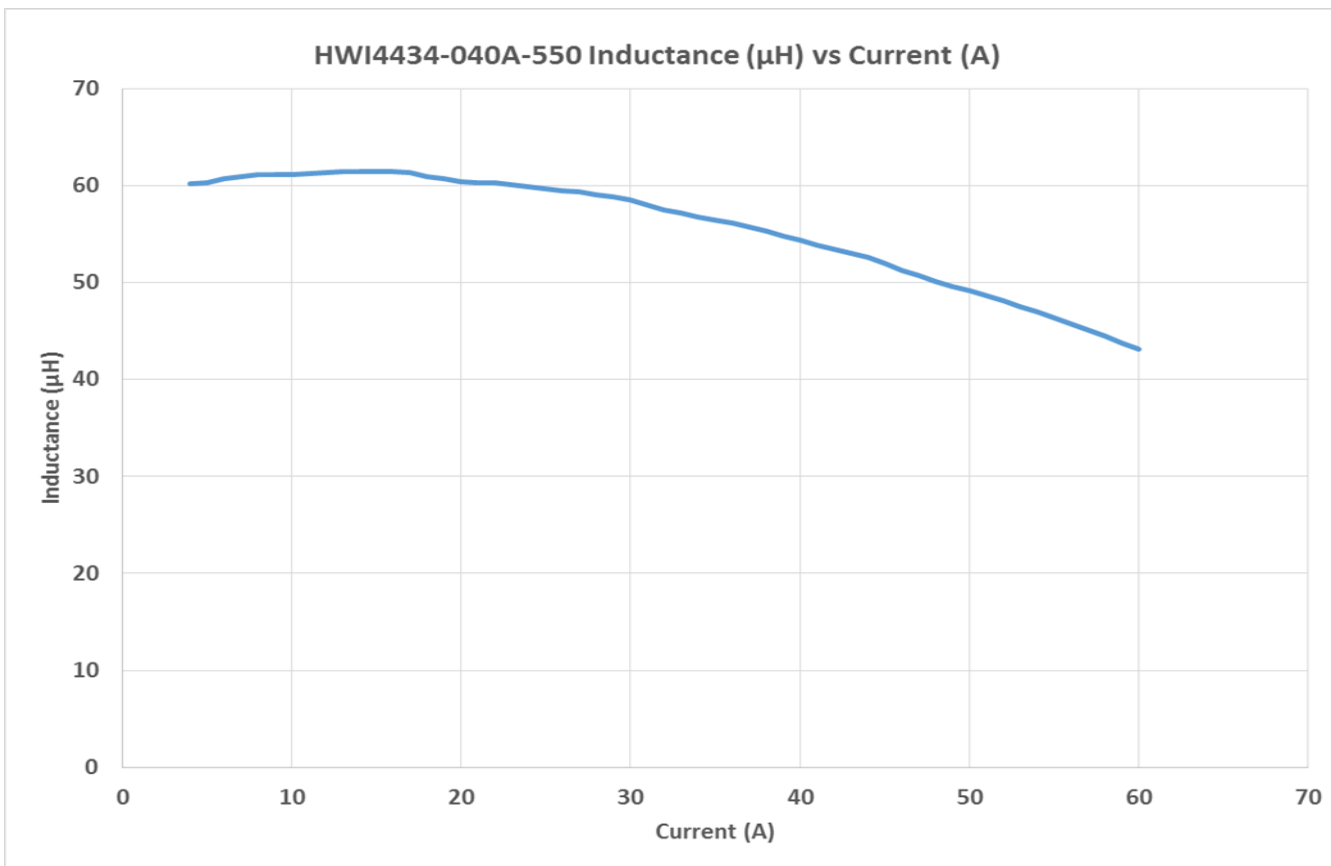
www.mpsind.com

Tel: (310) 325-1043 Fax: (310) 325-1044

Description Helical Wound Inductor	
Part Number HWI4434-040A-550H	REV B
WEIGHT: 250 gms SHEET: 1 OF 2	

Rev	Description	By	Date
B	Released for Production	MIG	17-Mar-16

DC Bias Data:



Notice of Proprietary Property

These drawings and specifications are the property of MPS and shall not be, reproduced, copied or used as the basis of manufacture of sale of apparatus without express written authorization

<p>Dimensions Unless otherwise specified .XX ± 0.254mm [.010"] .XXX ± 0.13mm [.005"]</p>		<p>DRAWN BY: CHECKED BY:</p>	<p>MIG KC</p>	<p>17-Mar-16 18-Mar-16</p>	<p>SIZE A</p>	<p>Part Number HWI4434-040A-550H</p>	<p>REV B</p>
						<p>WEIGHT: 250 gms</p>	<p>SHEET: 2 OF 2</p>



MPS INDUSTRIES, INC.

www.mpsind.com

Tel: (310) 325-1043 Fax: (310) 325-1044

Description

Helical Wound Inductor