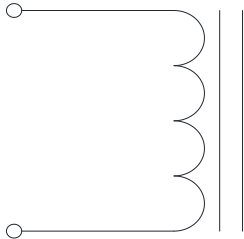


Rev	Description	By	Date
B	Released for Production	MIG	17-Mar-16

ELECTRICAL SPECIFICATIONS @ 25°C

L: 9.3μH±15% @ 10kHz, 1Vrms
 Isat: ΔL ≤ 10% @91A
 ΔL ≤ 30% @162A
 Irms: ΔT ≤ 20°C @ 52A
 ΔT ≤ 40°C @ 80A
 DCR: 1.1mΩ Max
 Hipot: 500Vdc, 1mA, 5s, wdg to core
 Insulation Class: Class H 180°C
 RoHS Compliant: Yes

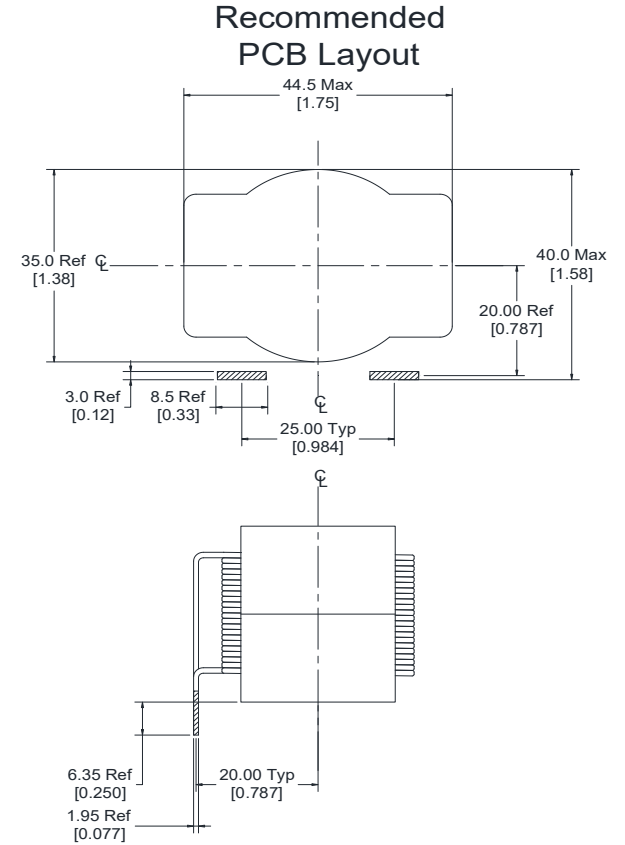
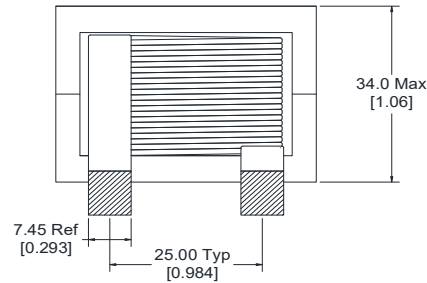
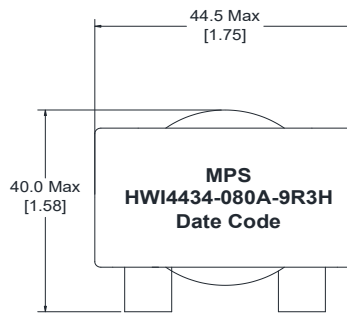
SCHEMATIC



MARKING

MPS
 HWI4434-080A-9R3H
 Date Code

DIMENSIONS



Dimensions: mm/[inch]

Notice of Proprietary Property

These drawings and specifications are the property of MPS and shall not be reproduced, copied or used as the basis of manufacture of sale of apparatus without express written authorization

Dimensions Unless otherwise specified .XX ± 0.254mm [.010"] .XXX ± 0.13mm [.005"]	DRAWN BY: CHECKED BY:	MIG AG	17-Mar-16	SIZE A	Part Number HWI4434-080A-9R3H	REV B
				WEIGHT: 250 gms		SHEET: 1 OF 2



MPS INDUSTRIES, INC.

www.mpsind.com

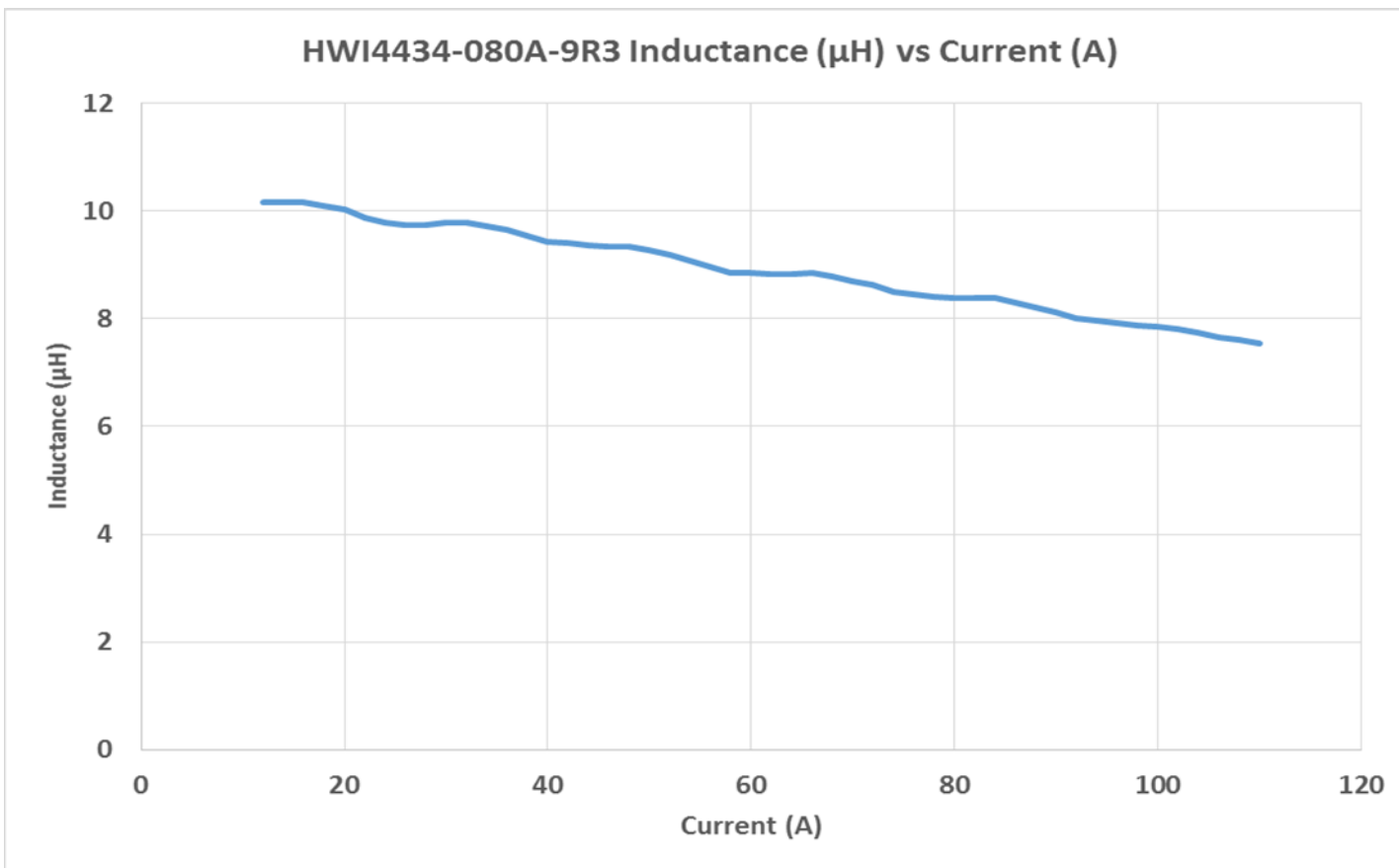
Tel: (310) 325-1043 Fax: (310) 325-1044

Description

Helical Wound Inductor

Rev	Description	By	Date
B	Released for Production	MIG	17-Mar-16

DC Bias Data:



MPS INDUSTRIES, INC.

www.mpsind.com

Tel: (310) 325-1043 Fax: (310) 325-1044

Notice of Proprietary Property

These drawings and specifications are the property of MPS and shall not be, reproduced, copied or used as the basis of manufacture of sale of apparatus without express written authorization

Description

Helical Wound Inductor

Dimensions	DRAWN BY:	MIG	17-Mar-16	SIZE	Part Number	REV
Unless otherwise specified .XX ± 0.254mm [.010"] .XXX ± 0.13mm [.005"]	CHECKED BY:	KC	18-Mar-16	A	HWI4434-080A-9R3H	B
					WEIGHT: 250 gms	SHEET: 2 OF 2